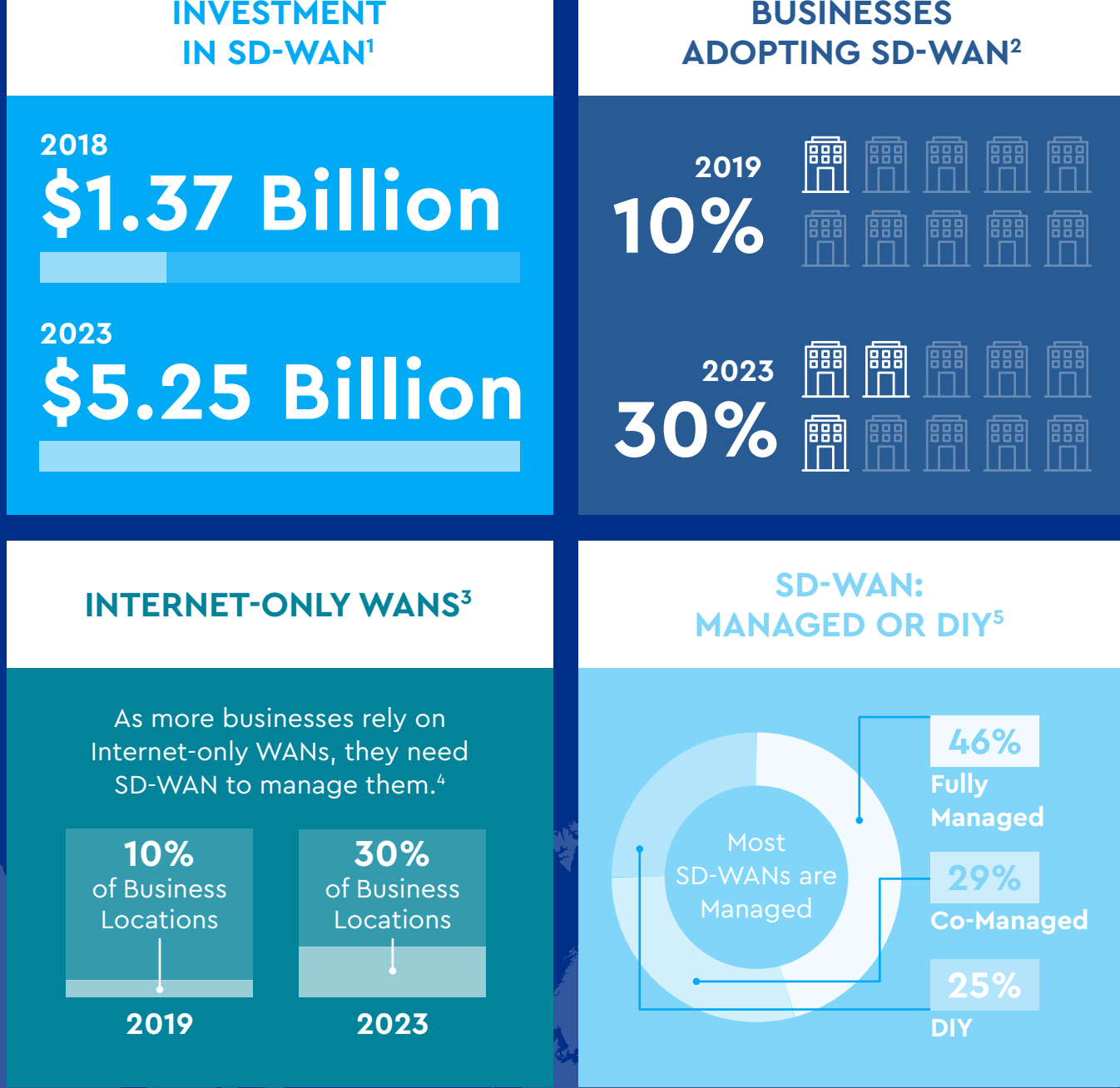


# The Future of the WAN is SD-WAN and SASE

## Global SD-WAN Growth



## What's Driving Demand for SD-WAN

### SUPPORTING THE EDGE



Whether it's connecting remote employees, adding/updating branches, implementing virtual desktops or any other edge initiative, SD-WAN provides more options and flexibility than traditional edge networking solutions, making it easy to quickly spin up new connections, choose the appropriate public or private connectivity and get the right throughput, all with greater network reliability your organization requires.

### GOING HYBRID (CLOUD/ON-PREMISES IT)



While traditional router-centric networks were designed for the data center, SD-WAN easily supports hybrid IT infrastructure delivering access to applications hosted on-premises, in public or private clouds and SaaS services. Get the appropriate quality of service (QoS) and security policy for each class of application based on business needs.

### SIMPLIFYING NETWORK ADMINISTRATION



Administering networks is time-consuming, expensive and the expertise is in short supply. SD-WAN reduces your reliance on hard-to-find network engineering talent through features such as centralized configuration, zero-touch provisioning and end-to-end orchestration. SD-WAN can automatically adapt in real time to network performance issues and deploy updates to locations in minutes instead of weeks or months.

### DELIVERING NETWORK DIVERSITY



SD-WANs allow you to make full use of multiple forms of WAN transport—public, private, fiber, wireless, and more—getting the network diversity you need for performance and reliability. Automatically direct traffic to the right option and ensure the right level of performance. Including delivering sub-second failover to prevent interruptions to business-critical functions.

## The Future of SD-WAN Is SASE: Secure Access Service Edge

As we rely on an increasingly distributed workforce, security at the edge becomes even more of an issue. SASE—Secure Access Service Edge or “Sassy”—addresses this challenge by tightly converging network and security functions.



### CLOUD-BASED

SASE replaces today's patchwork of vendors, policies, and point solutions that must be manually scaled with converged cloud services that can be used seamlessly from anywhere.

### PROTECTION AND VISIBILITY

SASE solutions deliver security beyond the traditional business perimeter—for cloud, edge, remote working, and more—giving you the visibility to see emerging threats and easily incorporate robust data protection.



### ZERO TRUST

SASE supports Zero Trust security models so you know you are protected whether a user is on your network or using public cloud.



SASE will be the dominant consumption model for WAN edge for new and refresh deployment by 2023.<sup>6</sup>

## Why Choose Cox Business Cloud Solutions for SD-WAN and SASE



### LEADING-EDGE SOLUTIONS

Cox Business implements solutions from VMware—consistently named a leader in WAN edge solutions by Gartner.



### MANAGED DELIVERY OVER NATIONWIDE NETWORK

Take advantage of fully managed and co-managed delivery over our nationwide fiber network.



### RAPIDRESPONSE SUPPORT

When network downtime occurs, Cox Business identifies and remediates the root cause, including escalating issues directly with any carrier outside the Cox footprint.



### COX BUSINESS SD-WAN WITH LTE

Minimize the impact of any Internet downtime through automatic failover to wireless.



### THE FUTURE OF REMOTE WORK

Cox Business has extensive experience integrating the latest network and cloud solutions to meet the collaboration and security needs of today's remote workforce.